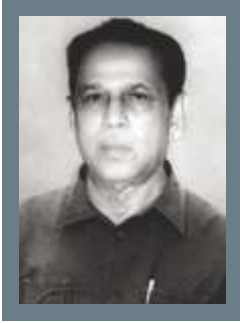




# HOSPITAL FURNITURE CATALOGUE



**Late V.M. Sulaiman**  
**Founder, Trichur Surgicals**

1935 - 2009

“Dedication, commitment and honesty helps an individual to excel in any area of his choice”



**Awards & Recognitions**

- The Economic Times Best Asian Healthcare Brands, 2017.
- Nehru Peace Foundation Award, 2008.
- Registered in National Small Industries Corporation LTD. (NSIC)
- Member of Confederation of Indian Industry Registered in Store Purchase Department, Government of Kerala.
- ISO 9001: 2008 Certificate from BSI.



**Mansoor Ali**  
**CEO, Trichur Surgicals**

“Trisco stands out for its commitment on caring. Over the years, we have added a good client base, which is growing exponentially, as a result of our commitment to quality product offering and the trust clients placed on our brand. As one of the pioneers in the healthcare industry in the country, we want to carry forward our legacy of human care, to improve the healthcare facility of the country”

## About us

Trisco, erstwhile Trichur Surgicals, a leading provider in the field of supply and installation of surgical instruments and medical equipment in the last 60 years, has come a long way in establishing itself as pioneers in the healthcare field. over this years it has carved a niche for itself through its professional excellence and dedicated service.

Trisco, keeping in line with the professionalism, scripted a glorious growth story with its exclusive range of medical equipment.

Trisco provides sales, service and technical support from its offices in **Kochi, Patturackal, Trivandrum and Bangalore.**

the company has set up an online trading platform for the customers ie.. [www.trisco.in](http://www.trisco.in), through this vital platform, it is effortless to identify and source right kind of equipment that matches specific requirements.

We offer an exclusive range of wide variety of hospital & surgical equipment designed as per the specifications of our esteemed customers. manufactured using ultra modern machines and sophisticated technology, we extend our clients superior quality products at affordable and market leading prices.

We hope that the catalogue with its specialties will help you to simplify your work and to make our good mutual business relations.



# HOSPITAL FURNITURE

## TS 42 ELECTRIC MEDICAL BED (5-FUNCTION)

APPLICABLE TO ICU/SCU/CCU WARDS



Model No:									
<b>TS 42</b>	0-70°	0-35°	500-700	1950	2170	900	500-700	0-12°	0-12°

All measurements in mm

### Salient Features

- Five functions: Back-rest knee-rest Trendelenburg and reverse Trendelenburg height adjustment & CPR
- Bed head and tail are made of high quality plastic to ensure stability and aesthetic design
- 4 ABS up and down guard rail to satisfy different care need and it can be hidden if not needed
- Centralized brake system
- ABS left-right push switch to load and unload freely and safely
- Heavy duty 32 mm diameter telescopic IV poles
- LINAK special medical treatment actuator to ensure safety while overweight

## TS 531A ICU BED HIGH/LOW (MANUAL)

APPLICABLE TO ICU/SCU/CCU WARDS



Model No:									
<b>TS 531A</b>	0-70°	0-40°	510-710	1950	2170	900	510-710	0-12°	0-10°

All measurements in mm

### Salient Features

- Metal frames are pre-treated and epoxy powder coated
- Four 125 mm diameter non-rusting twin roller caster wheel two with brake
- Detachable 32 mm diameter SS bows with panels
- Body coloured PVC buffer on all four corners
- SS telescopic IV rods and four IV rod locations

### Optional Accessories

Urine Bag Holder, Mattress

## TS 531B ICU BE D FIXED HEIGHT

APPLICABLE TO ICU/SCU/CCU WARDS

All measurements in mm

Model No:									
<b>TS 531B</b>	0-70°	0-40°	NA	1950	2170	900	600	0-10°	0-10°



### Salient Features

- Body coloured PVC buffer on all four corners
- Pre-treated & epoxy powder coated
- Four section perforated CRCA sheet top
- Three separate screws for back-rest knee-rest Trendelenburg and reverse Trendelenburg position by individual SS folding handles
- Full length SS tubular collapsible side rails
- Detachable 32 mm diameter SS bowls with panels
- Four 125mm diameter non-rusting twin roller caster wheels, two with brake
- SS telescopic IV rods & four IV rod locations.

### Optional Accessories

Urine Bag Holder, Mattress

## TS 58 ABS MANUAL TWO-CRANK BED

APPLICABLE TO ICU/SCU/CCU WARDS

All measurements in mm

Model No:									
<b>TS 58</b>	0-70°	0-40°	NA	1950	2170	900	600	0-10°	0-10°



### Salient Features

- Head and tail boards are made of ABS structure
- Attractive in appearance
- Bed Board : Cold board punch shaped at one time
- Static powder coating
- Aluminium alloy folding guard rail
- Single touch handle
- ABS hand crank that enables overloading protect system

## TS 616 ABS MANUAL TWO-CRANK BED

APPLICABLE TO ICU/SCU/CCU WARDS

All measurements in mm

Model No:									
<b>TS 616</b>	0-70°	0-40°	NA	2000	2150	900	500	NA	NA



### Salient Features

- Head and foot boards use ABS structure
- Bed Board: Cold board punched shape at one time
- Static powder coating
- ABS hand crank that uses over loading protect system
- Immovable legs make the bed more stable

## TS 610 STAINLESS STEEL TWO-CRANK BED

APPLICABLE TO ICU/SCU/CCU WARDS

All measurements in mm										
Model No:										
<b>TS 616</b>	0-70°	0-40°	NA	2000	2080	900	500	NA	NA	



### Salient Features

- Head and foot boards are made of 304 stainless steel tubes
- Bed frame are of steel tubes
- Bed board is shaped by cold roll steel sheet at one time
- Screws with overload protect system, easy to operate and prevent any breakage while operating

### Optional Accessories

Wheels, side rails, rack for shoes, dining table, hooks for urine bags, back box.

## TS 631 MANUAL TWO-CRANK BED

APPLICABLE TO ICU/SCU/CCU WARDS

All measurements in mm										
Model No:										
<b>TS 616</b>	0-70°	0-40°	NA	2000	2080	900	500	NA	NA	



### Salient Features

- Four section perforated CRCA sheet top
- Two screws for back-rest and knee-rest position operated by individual folding handles
- Detachable 32 mm diameter SS bows with panels
- Four flush IV rod locations
- Pre-treated and epoxy powder coated

### Optional Accessories

SS swing-away side rails, SS Telescopic IV rod, urine bag holder, mattress, four 125mm dia non-rusting twin caster wheel two with brake.

## TS 517 ABS MANUAL ONE-CRANK BED

APPLICABLE TO ICU/SCU/CCU WARDS

All measurements in mm										
Model No:										
<b>TS 616</b>	0-75°	NA	NA	2000	2150	900	500	NA	NA	



### Salient Features

- Head and foot- end boards are made using ABS structure
- Aesthetic design
- Bed board is made of imported cold board i.e punch shaped at one time
- Static powder coating
- ABS hand crank that ensures overloading protect system
- Immovable legs make the bed more stable

## TS 611 STAINLESS STEEL ONE-CRANK BED

APPLICABLE TO ICU/SCU/CCU WARDS

Model No:	All measurements in mm								
<b>TS 611</b>	0-75°	NA	NA	2000	2080	900	500	NA	NA



### Salient Features

- Head and foot boards are made of 304 stainless steel tube
- Bed frames are made of rectangular shaped tubes to ensure stability
- Bed board is shaped by cold roll steel sheet at one time
- Screws with overload protect system, easy to operate and prevent any breakage while operating
- The joint part of the leader and screw rod uses gimbal coupling

### Optional Accessories

Wheels, side rails, rack for shoes, dining table, hooks for urine bags, back box.

## TS 611A STAINLESS STEEL ONE-CRANK BED

APPLICABLE TO ICU/SCU/CCU WARDS

Model No:	All measurements in mm								
<b>TS 611A</b>	0-75°	NA	NA	2000	2150	900	500	NA	NA



### Salient Features

- Head and foot boards are made of 304 stainless steel tube
- Bed frames are made of rectangular shaped tubes to ensure stability
- Bed board is shaped by cold roll steel sheet at one time
- Screws with overload protect system, easy to operate and prevent any breakage while operating
- The joint part of the leader and screw rod uses gimbal coupling

### Optional Accessories

Wheels, side rails, rack for shoes, dining table, hooks for urine bags, back box.

## TS 205 WARD BED

### Salient Features

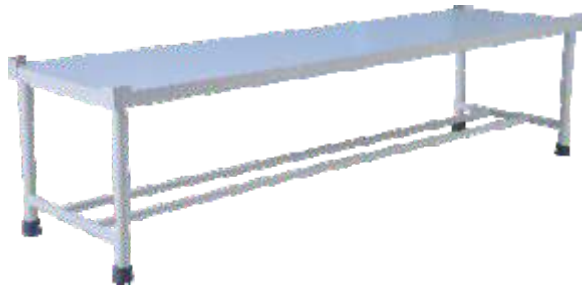
- Pre-treated and epoxy powder coated
- Tubular frame work
- 18 gauge CR sheet

### Specification

1980 x 900 x 600 mm



## TS 630 BYSTANDER BED



### Salient Features

- Pre-treated and epoxy powder coated
- Tubular frame work
- 18 gauge CR sheet

### Specification

1950 x 650 x 650 mm

## TS 636 STAINLESS STEEL CHILDREN BED

### Salient Features

- Made of SS 304 advanced stainless steel tube
- Casters are made of PU materials to ensue longer life
- Detachable side-rail at one side

### Specification

1500 x 700 x 600 mm



### TS 208 BED SIDE LOCKER SEMI DX

Nova Pan Board  
50mm twin caster wheels  
One drawer, one storage cabinet  
and open space in the middle



### TS 87 ABS SURFACE BEDSTAND

One drawer and one storage cabinet  
Thermos bottle rack, two towel  
holders one on each side.  
Mounted on 50 mm dia roller  
wheels

**Specification:** 460 x 410 x 850 mm



### TS 209 BED SIDE LOCKER STANDARD

**Specification:** 400 x 400 x 800 mm

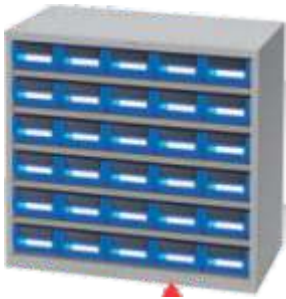
Single SS top, pre-treated and epoxy  
powder coated square frame work



### TS 28 INSTRUMENT CABINET

MS Powder coated finish with  
front glass door. Two drawers in  
the middle. Horizontal and vertical  
partitions





**RM - 530**

**Specification:**  
H880 X W900 X D420  
Drawer : 30 pcs  
55 pcs / 20 ft: 110 pcs/ 40 ft



**CAE - 330**

**Specification:**  
H880 X W600 X D283  
Drawer : 30 pcs  
110 pcs / 20 ft: 220 pcs/ 40 ft



**TS 737 LIFT OVER BED TABLE**

**Specification:**  
810 X 440 X 750/1070mm



**TS 737B LUXURIOUS LIFTING OVER BED TABLE**

**Specification:**  
810 X 440 X 750/1070mm



**TS 1033 SURGICAL STOOL WITH BACK SUPPORT**



**TS 1035 REVOLVING STOOL**



**TS 1034 REVOLVING STOOL**

**Specification:**  
Ht 460 / 680 mm (screw adj)  
SS top dia 300 mm  
Four legs, SS top pre-treated and epoxy coated



**TS 1032 PATIENT STOOL**

**Specification:**  
300 x 300 x 450 mm  
SS top, square tubular frame work pre-treated and epoxy powder coated

## TS 1050 EXAMINATION TABLE DELUXE

APPLICABLE TO ICU/SCU/CCU WARDS



### Salient Features

- CRCA rectangular tube frame with CRCA sheet cabinets
- Fixed & upholstered in two sections
- Retractable step stool
- Head-rest adjustable on gas spring
- Three cabinets and three drawers
- BP apparatus tray
- MS frames are pre-treated and powder-coated

### Specification

Overall dimension : 1900 x 560 x 850 mm

## TS 1048 EXAMINATION TABLE

APPLICABLE TO ICU/SCU/CCU WARDS



### Salient Features

- Adjustable back-rest
- Full SS table and frame
- SS tubular construction

### Specification

Overall dimension : 1800 x 560 x 850 mm

## TS 1049 EXAMINATION TABLE

APPLICABLE TO ICU/SCU/CCU WARDS



### Salient Features

- Adjustable back-rest
- Pre-treated and epoxy powder coated table and frame
- MS tubular construction, machine pressed two sectional CRC sheet top

### Specification

Overall dimension : 1800 x 500 x 875 mm



**TS 1034  
THREE FOLD SCREEN**

Overall dimension:  
2280 W X 1740 H mm  
Casters dia 50 mm  
Three fold screen with curtain  
Pre-treated and epoxy coated



**TS 1036  
IV STAND**

Overall dimension:  
330 dia x 300 H mm



**TS 1039  
IV STAND**

Overall dimension:  
330 dia x 300 H mm



**TS 1041  
KICK BUCKET**

SS Basin dia 350mm  
Two tier stand with SS  
Basin. Three 75 mm dia  
casters. Pre-treated  
epoxy coated finish



**TS 1055 FOOT STEP**

Overall dimension:  
500 L x 250 W X 200 H mm



**TS 1040  
KICK BUCKET  
SINGLE**

SS basin dia: 350 mm  
H 860 mm  
Three 75 mm dia castors  
Pre-treated & epoxy powder  
coated frames & SS container

## TS 766 EMERGENCY RECOVERY TROLLEY



### Salient Features

- Two section X-ray permeable detachable top and full length X-ray cassette holder
- Back- rest raised on a ratchet to prevent rotation in the reverse direction thereby ensuring safety
- Gas spring for Trendelenburg & reverse Trendelenburg position with individual SS folding handles
- Swing-away type SS railing on both sides & rubber buffers on all corners.
- SS plain IV rod location & Oxygen cylinder holder.
- Pre- treated & epoxy powder coated.

### Specification

Overall dimension: 2170 L x 660 W x 630/850 H mm  
Rectangular tube: 50 x 25 mm  
Corner diameter: 125 mm



## TS 840 PATIENT SHIFTER

### Salient Features

- Frames are made of stainless steel (SS 304)
- Aluminium bearings are used to increase the efficiency

### Specification

Overall dimension: 630mm x 360 mm

Diameter of the roller: 45 mm

Length of the roller: 570 mm



## TS 866 STEEL STRETCHER

### Salient Features

- Bed board mainly use advanced aluminium, shaped at once and can be adjusted up and down
- Uses international advanced central control braking system
- Stable and reliable
- Bed board is a divided structure
- Upside use imported spring as the strut
- Easy and convenient to handle



## TS 835 AMBULANCE STRECHER

### Salient Features

- Light weight, robust structure, aesthetic design, easy antiseptis, small size and convenient to use
- Utilizes high precision mechanical transmission
- Automatically folded through the left and right hand control handle
- Made of high quality aluminium alloy tubes
- Applicable for various kind of hospitals, emergency centers, ambulance and battle fields

### Specification

Overall dimension: 1900mm x 560 mm x 280/900mm

Load weight: upto 120 kg

Product weight: 40 kg

Diameter of casters; 125 mm



## TS 838 STRECHER ON TROLLE

### Salient Features

- Removable stretcher top made of SS sheet
- Pushing handle at both end of the structure top
- Fully SS framework
- Trolley mounted on 150 mm dia casters, 2 with brake.
- Oxygen cylinder holder

### Specification

Overall dimension: 2000mm x 650 mm x 780mm



## TS 229 STRETCHER ON TROLLE

### Salient Features

- Frame work made of 1.25 x 16 G vertical 1 x 18 G horizontal tube
- Removable stretcher top made of MS sheet.
- Pushing handle at both end of the structure top.
- Pre treated and epoxy coated.
- Trolley mounted on 150mm dia casters, 2 with brake.

### Specification

Overall dimension: 2130mm x 560 mm x 810mm



TS 1021 HOSPITAL BED PANELS



TS 1023 ABS PANEL



TS 1022 ABS PANEL



TS 1024 CASTER WHEELS



TS 1025 CASTER WHEELS



TS SS COLLAPSIBLE SIDE RAIL



TS 533 ALUMINIUM SIDE RAIL



TS 539 SS FALL ON SIDE RAIL



TS 536A MATTRESS FOR  
BED FLUID PROOF



TS 1038 CYLINDER TROLLEY



For Service Please Call:  
(91) 9562043688



Buy online:  
[www.trisco.in](http://www.trisco.in)





## TRICHUR SURGICALS

### WAREHOUSE

Veliyannur Road, Thrissur - 21, Kerala.  
Phone : +91 487 2444044, 2420813  
E-mail : [trisco@trichursurgicals.com](mailto:trisco@trichursurgicals.com)  
[www.info@trisco.in](http://www.info@trisco.in)

### CORPORATE OFFICE

Parijath Building, 28/351-1A  
Patturaikal, Thrissur.  
Phone : +91 487 2420814  
Mobile : 8589058554  
E-mail : [trichur@trisco.in](mailto:trichur@trisco.in)

### KOCHI OFFICE

MES Building Judges Avenue,  
Kaloor, Kochi - 17, Kerala.  
Phone : +91 484 2400554, 3048555  
Mobile : 8589061554  
E-mail : [sales@trichursurgicals.com](mailto:sales@trichursurgicals.com)

### TRIVANDRUM OFFICE

Murinjapaalam, Old Medical College Road  
Medical college P O., Trivandrum-695011.  
Phone : +91 471-2444030 / 2444060  
Mobile : 9447100554  
E-mail : [tvm@trichursurgical.com](mailto:tvm@trichursurgical.com)

